



Tempus Project CENEAST: Reformation of the Curricula on Built Environment in the Eastern Neighbouring Area

Kharkiv Meeting 8th – 9th February 2014

UNIBO AND SVIMAP CONTRIBUTION IN WP2-3-4

What's up ?

massimo.bianchi@unibo.it

laura.tampieri@unibo.it

gabriella.paganelli3@unibo.it

Committments of major involvements for UNIBO and SVIMAP as scheduled in the CENEAST Project

- WP2 - Analysis of framework of BSC, MSC, PHD and market needs
- WP3 – Development of the Centre promoting lifelong learning outside classical classroom environment with various parties of the society in a knowledge triangle perspective
- WP4 – Feedback of the students, teachers, administrative and interested parties involved



Tempus

WHAT'S NEXT ?

UNIBO will give a contribution to the project realization in sustainable built environment training courses and modules and in the analysis of curricula, according to Bologna practices.. In addition, UNIBO will also contribute to a range of other activities led by other partners as detailed in the all work package sections.

It will be also involved in teaching activities, conducting seminars and supervising students during the programme.

In addition, UNIBO will also contribute to a range of other activities led by other partners as detailed in the all work package sections.

WP Type	Deliverable / Activity Ref. N°	Activities (as indicated in the LFM)	2102	2013											2014											2015													
			dec	jan	feb	mar	apr	may	jun	jul	aug	sep	oct	nov	dec	jan	feb	mar	apr	may	jun	jul	aug	sep	oct	nov	dec	jan	feb	mar	apr	may	jun	jul	aug	sep	oct	nov	
			1	2	3	4	5	6	7	8	9	10	11	12	13	14	15	16	17	18	19	20	21	22	23	24	25	26	27	28	29	30	31	32	33	34	35	36	
MNGT	1.01	Development of communication infrastructure	0	X	0	X	0	X												X																		0	
MNGT	1.2.	Continual management and reporting			0	X	0	X	0	X	0	X	0	X	0	X	0	X	0	X	0	X	0	X	0	X	0	X	0	X	0	X	0	X	0	X	0	X	
DEV	2.1.	The framework report for the common curricular		X	0	X	0	X	0	X																													
DEV	2.2.	Report on common grounds for teaching and learning						X	0	X	0	X																											
DEV	2.3.	Module specifications and teaching materials								X	0	X	0	X	0	X	0	X	0	X	0	X																	
EXP	3.1.	Development of e-interuniversity networked system				X	0	X	0	X	0	X	0	X	0	X	0	X	0	X	0	X	0																
EXP	3.2.	Development of the virtual research environment						X	0	X	0	X	0	X	0	X	0																						
EXP	3.3.	Training, lecturing and guest visits																					0	0	0	0													
EXP	3.4.	Training of students																								X	X	X	X	X	X	X	X	X	X	X	X	X	X
QPLN	4.1.	Report on internal CENEAST monitoring results			X	0	X	0	X	0	X	0	X	0	X	0	X	0	X	0																			
QPLN	4.2.	Report on external CENEAST monitoring results												X	0	X	0	X	0	X	0	X	0	X	0	X	0	X	0	X	0	X	0	X	0	X	0	X	
QPLN	4.3.	Analyses and recommendations																								X	0	X	0	X	0	X	0	X	0	X	0	X	0
DISS	5.1.	Dissemination through branch organizations																										0	X	0	X	0	X	0	X	0	X	0	
DISS	5.2.	Dissemination through international conferences																											X	0	X	0	X	0	X	0	X	0	
DISS	5.3.	Dissemination through websites																											X	0	X	0	X	0	X	0	X	0	
DISS	5.4.	Printed dissemination material																																X	0	X	0		

Next and Incoming Operative Activities

- **Development of a common approach to teaching and learning activities, good practices quality assurance and better management of teaching and student services (WP2)**
- **Development of a interuniversity networked system (WP3)**
- **Development of the virtual research environment (WP3)**
- **Training, lecturing and guest visits (WP3)**
- **Training of students**

DISTANCE LEARNING

SL Simulimpresa Laboratory

- **The *Practice firm* course aims at providing direct knowledge of the functioning of an organizations through a faithful reproduction of its management, administrative and organizational methods and procedures. The aim is to increase students' skills and knowledge as well as to consolidate their knowledge of business subjects already dealt with in other courses in order to pass from a merely theoretical learning approach to a more practical and active one. In the simulation of a business, students are required to actively participate in the company activities and to be responsible for them by playing a central role in all the aspects relating to the company management.**



The Laboratory for Enterprise Simulation in Forlì and the performance of Perting Ltd

2001 -2014



**FIRST AWARD IN
2009 NEW YORK
GLOBAL
BUSINESS
CHALLENGE**



Tempus

Siberian Business Consulting



2004 – RUSSIA (Novosibirsk)
Consulting Services
TEMPUS project “Life Long Learning Siberian Structure Development”

Women Magazine
2005 – BOSNIA (Sarajevo)
Publishing sector
L.R. project “Social Work and Long Life Learning for weak categories in Bosnia”
Prov. Forlì - Cesena

KK Personal Robe



2004 – ALBANIA (Shkoder)
Textile sector
L.R. project “Education to European Managerial Culture”
Prov. Forlì-Cesena


Exotica Siberian Tourism



2004 – RUSSIA (Novosibirsk)
Tourism Sector
TEMPUS project “Life Long Learning Siberian Structure Development”

Perting srl

Smile Guard



2007 – KAZAKHSTAN (Almaty)
Services
TEMPUS Project “Implementing ECTS at Kazakhstan University”

Elbasan Renaissance Tour



2009 – ALBANIA (Elbasan)
Cultural – Tourism sector
L.R. Project “Start up of professional Education in Elbasan with particular regard to weak categories”

AIPO'S - AIVO

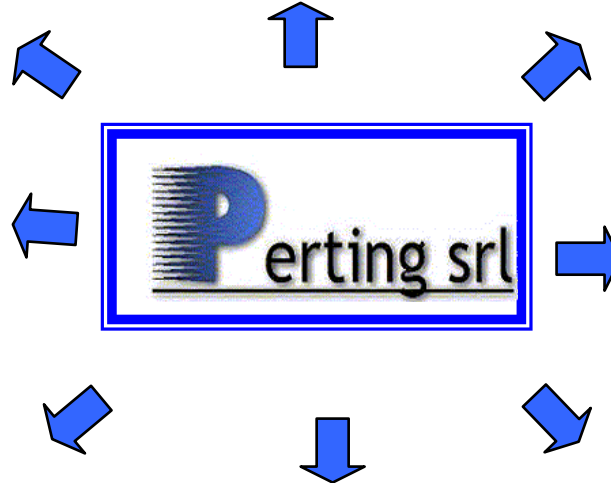


2010 – ITALY (Forlì) - RUSSIA (Astrakhan)
Project MIUR “Exploratory seminar on the models and methodologies for the entrepreneurial and touristic development of low Volga. Interuniversity international cooperation”

NoRisk s.r.l.



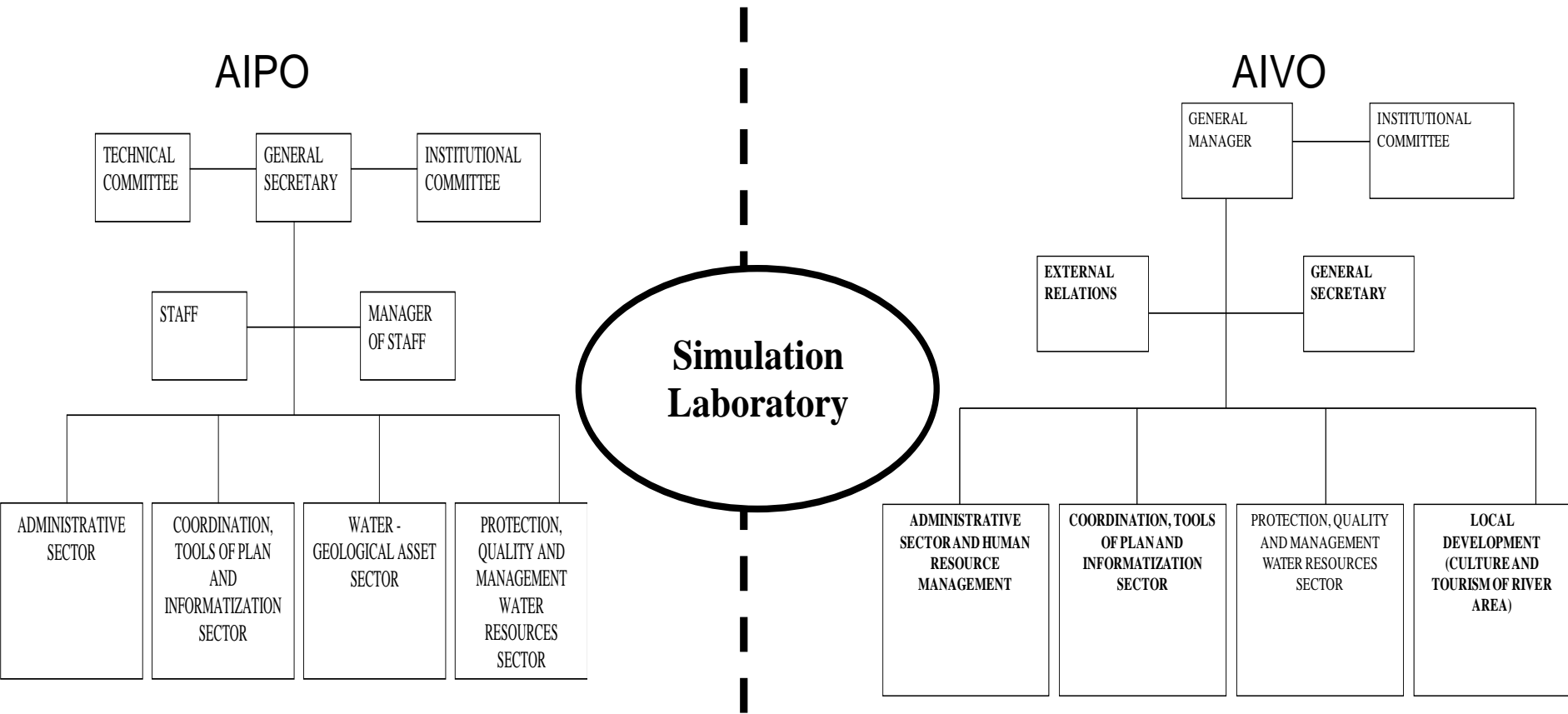
2006 – ITALY (Parma)
Consulting Services
Simulated Enterprise Program European Network





The Role of SL in Distance Learning to create a virtual space for Teaching and Applied Research Experiences

REAL NET. [already existing] >>> SIMULATED NET. >>> REAL NET. [to be created]





Bianchi M., Imoniana J.O., Tampieri L., Tesic J. (2009), Comparing the role of managerial control in micro family business start-up in Bosnia Erzegovina, Brazil and Italy, *Corporate Ownership & Control*, Volume 7, Issue 2, Winter 2009, pp. 224-237

Bianchi, M. (2000), Le relazioni interaziendali nella rilevazione e valutazione dei confini organizzativi, in *Processo di Terziarizzazione dell'economie e nuove sfide di governo delle aziende, Proceedings of XXIII Conference AIDEA*, McGraw-Hill Milano, pp. 200-214.

Bianchi, M. (2004), Trust impact in the renewal of management systems :Theoretical problems and empirical evidences for boundary maintaining. *Economic Research*, Vol. 17, n. 2, pp. 63-82.

Bianchi, M., Tampieri L. (2010), La simulazione della creazione d'impresa attraverso la stabilizzazione dei rapporti con clienti e fornitori, *Proceedings of XI Workshop dei Docenti e dei Ricercatori di Organizzazione Aziendale*. Bologna 16-18 Giugno.

Tampieri L. (2009), *Simulazione in Second Life e Business Virtuale nello start up d'impresa del Sistema Moda*, Bologna : CLUEB.



A tentative of road map for making a Virtual Environment for Teaching and Research by SL

- Gathering adhesions to SL (With SL Contact Person)
- Single videoconference to test connections and premises
- Local building of a Team on Built Environment
- Creation of a (VIRTUAL) Local Agency / Professional Organization / Consulting Company in BE Learning agreements
- Simulimpresa Pilot Classrooms Start Up



A tentative of road map for making a Virtual Environment for Teaching and Research by SL

		Feedback		
		St.Petersburg	Kaliningrad	Kharkiv ?
St.Petersburg UNIBO and SVIMAP Slides				
•Gathering adhesions to SL (With SL Contact Person)		0	0	
•Single videoconference to test connections and premises		0	0	
•Local building of a Team on Built Environment		0	0	
• Creation of a (VIRTUAL) Local Agency / Professional Organization / Consulting Company in BE Learning agreements		0	0	
•Simulimpresa Pilot Classrooms Start Up		0	0	



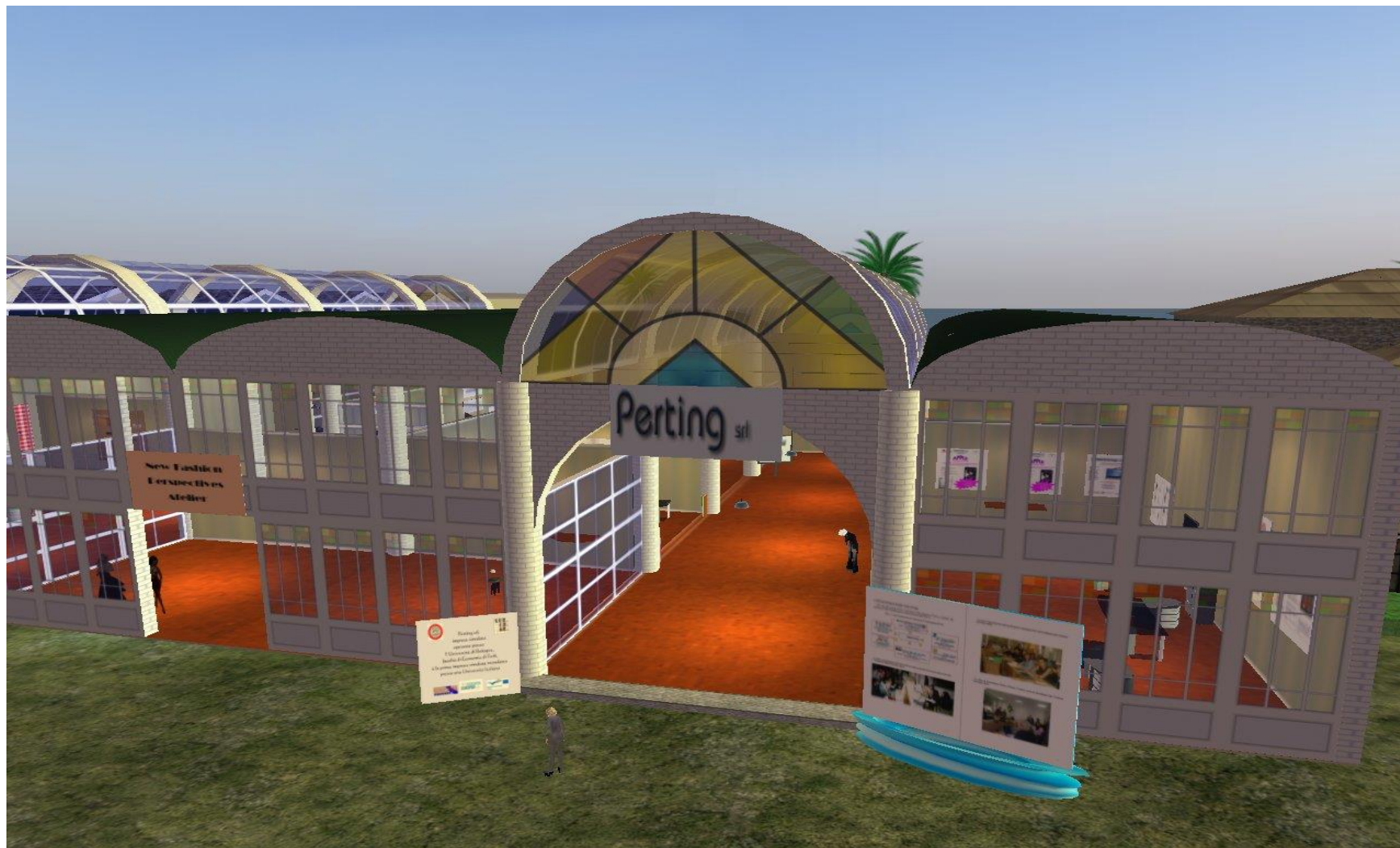
Next STEPS

- Videoconference on Simulimpresa (Dr.ssa Gabriella Paganelli)
- Networking and clustering in Built Environment (Prof. M.Bianchi)
- Longevity of links and ties renewal (Prof. Laura Tampieri)
- Connection lecture with City Management Bologna Master (Prof.Luca Mazzara)

**Simulimpresa
Laboratory is
waiting for You !**



ALSO IN THE VIRTUAL WORLD OF LINDEN LAB SECOND LIFE



Connection with UNIBO Simulimpresa Laboratory

- 14th February 2014
- 13.00 (Roma Time)
- To book the participation send mail :
massimo.bianchi@unibo.it
laura.tampieri@unibo.it
gabriella.paganelli3@unibo.it



Tempus

<http://www.unibo.it/Portale/Offerta+formativa>

<http://www.simulimpresa.unibo.it>

<http://www.perting.poloforli.unibo.it>

WAITING FOR ENROLMENTS !!!

Thanks for attention !!!