



Tempus Project CENEAST: Reformation of the Curricula on Built Environment in the Eastern Neighbouring Area

Vilnius Meeting 24th – 29th March 2014

**Work Based Learning and Triangle with the Society by Practice Management**

[massimo.bianchi@unibo.it](mailto:massimo.bianchi@unibo.it)

[laura.tampieri@unibo.it](mailto:laura.tampieri@unibo.it)

[gabriella.paganelli3@unibo.it](mailto:gabriella.paganelli3@unibo.it)

# Committments of major involvements for UNIBO and SVIMAP as scheduled in the CENEAST Project

- WP3 – Development of the Centre promoting lifelong learning outside classical classroom environment with various parties of the society in a knowledge triangle perspective
- WP4 – Feedback of the students, teachers, administrative and interested parties involved

# The Basic Triangle

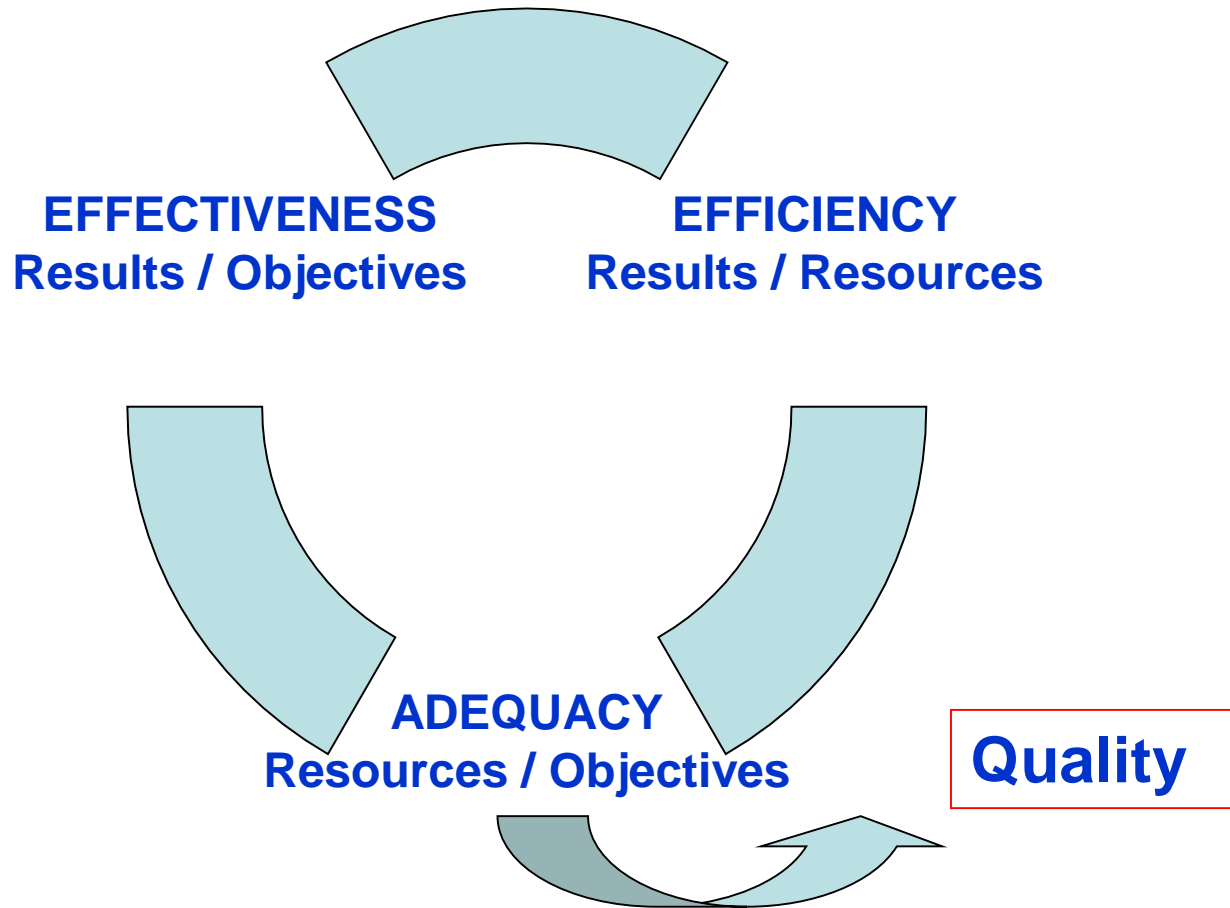


# Main perceived results for Project Dissemination





# Basic Performance Indexes





# Resilience Performance Dimensions

**EFFECTIVENESS**

Beneficiaries  
People  
Organizations

**EFFICIENCY**

Involvement of Self Initiative  
And Entrepreneurship

**ADEQUACY**

Governance Temporary  
and Stable Structures for  
Resilience Governance

**Quality**

# Dissemination tools

- Conferences and workshops open to Professional and Business Community ( Also in videoconference )
- Life long learning initiatives
- Internship in Universities and Research Centers
- Apprenticeship in Business and Professional Organizations
- Entrepreneurial/ Professional spin off
- Practice Management
  - BP Mothership for Simulated Enterprise
  - Triangle Teach/Res.- Students – BP Representative

# Next and Incoming Operative Activities

- **Development of a common approach to teaching and learning activities, good practices quality assurance and better management of teaching and student services ( WP2 )**
- **Development of a interuniversity networked system ( WP3 )**
- **Development of the virtual research environment ( WP3 )**
- **Training, lecturing and guest visits (WP3)**
- **Training of students**





# A tentative of road map for making a Virtual Environment for Teaching and Research by SL

- Gathering adhesions to SL ( With SL Contact Person )
- Single videoconference to test connections and premises
- Local building of a Team on Built Environment
- Creation of a ( VIRTUAL ) Local Agency / Professional Organization / Consulting Company in BE Learning agreements
- Simulimpresa Pilot Classrooms Start Up



Tempus

# Tools of dissemination to be used

Video Conferences

Distance Learning

Practice Management by Simulimpresa



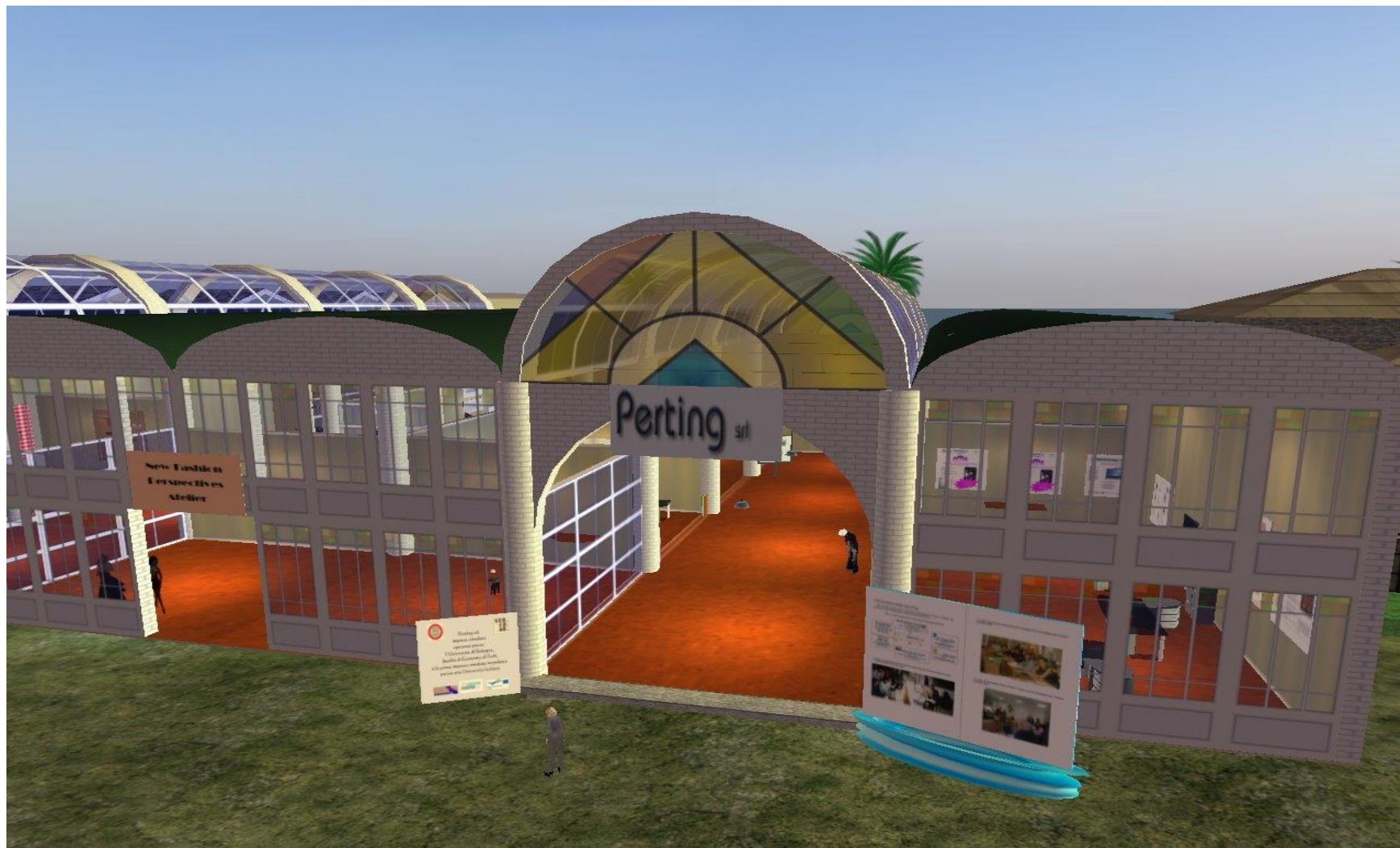
# Next STEPS

- **Videoconference on Simulimpresa**  
( **Dr.ssa Gabriella Paganelli** )
- **Networking and clustering in Built Environment (**  
**Prof. M.Bianchi** )
- **Longevity of links and ties renewal**  
( **Prof. Laura Tampieri** )
- **Connection lecture with City Management**  
**Bologna Master**  
(**Prof.Luca Mazzara** )

**Simulimpresa  
Laboratory is  
waiting for You !**



# ALSO IN THE VIRTUAL WORLD OF LINDEN LAB SECOND LIFE



# Connection with UNIBO Simulimpresa Laboratory

- 14th February 2014 (Videoconference with Angela, Nikolai and Wladimir )
- To book next tentative send mail to:  
[massimo.bianchi@unibo.it](mailto:massimo.bianchi@unibo.it)  
[laura.tampieri@unibo.it](mailto:laura.tampieri@unibo.it)  
[gabriella.paganelli3@unibo.it](mailto:gabriella.paganelli3@unibo.it)



Tempus

<http://www.unibo.it/Portale/Offerta+formativa>

<http://www.simulimpresa.unibo.it>

<http://www.perting.poloforli.unibo.it>

**WAITING FOR ENROLMENTS !!!**

**Thanks for attention !!!**